

FuzzyMabel Pattern

FuzzyMabel Yarns 128 S Main Street, Lancaster, SC 29720

1-866-FUZZYMABEL (389-9962) • www.fuzzymabel.com

Leaf Lace Stole



This simple and elegant lace stole is made in two pieces that are grafted together up the center back for a perfectly mirrored look side to side.

Materials:

520 yards light worsted-weight mohair;
1 pair U.S. size 10 needles
(straight or circular at least 24" long);
stitch holder or waste yarn;
yarn needle

Gauge: approximately 3.75 stitches per inch
before blocking

Finished size: approximately
22" x 72" after severe blocking

original made with 2 skeins Fiesta Heaven 100% kid mohair

Abbreviations:

K: Knit

K2tog: Knit 2 stitches together

SK2P: Slip 1 stitch knitwise, K2tog, pass slipped stitch over.

SSK: slip 2 stitches as if to knit, then knit those 2 stitches together

YO: Yarn over

Directions:

Piece 1:

Cast on 63 stitches very loosely.

Row 1 and all odd rows: Purl all stitches

Row 2: K1, (K1, YO, K3, SK2P, K3, YO) six times, K2.

Row 4: K1, (K2, YO, K2, SK2P, K2, YO, K1) six times, K2.

Row 6: K1, (K3, YO, K1, SK2P, K1, YO, K2) six times, K2.

Row 8: K1, (K4, YO, SK2P, YO, K3) six times, K2.

Row 10: K1, K2tog, (K3, YO, K1, YO, K3, SK2P) five times, K3, YO, K1, YO, K3, SSK, K1.

Row 12: K1, K2tog, (K2, YO, K3, YO, K2, SK2P) five times, K2, YO, K3, YO, K2, SSK, K1.

Row 14: K1, K2tog, (K1, YO, K5, YO, K1, SK2P) five times, K1, YO, K5, YO, K1, SSK, K1.

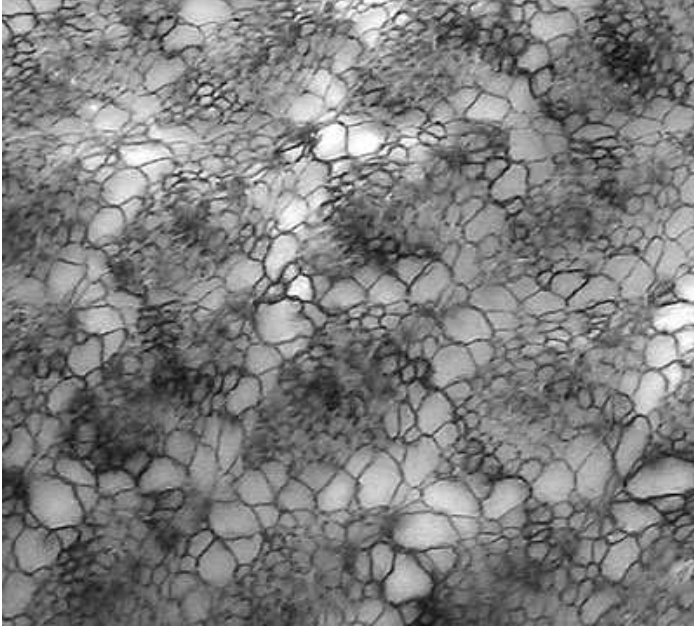
Row 16: K1, K2tog, (YO, K7, YO, SK2P) five times, YO, K7, YO, SSK, K1.

Copyright 2009 Fuzzy Mabel, LLC. This pattern is intended for personal, non-commercial use only and may not be reproduced, sold, or used for instruction without explicit permission of Fuzzy Mabel, LLC. For more information, please contact Fuzzy Mabel at www.fuzzymabel.com or 1-866-FUZZYMABEL (389-9962).

Repeat rows 1-16 nine more times (10 repeats total).

Purl one more row, then cut yarn, leaving a 4" tail. ***Do not bind off!***

Transfer these stitches to stitch holder, spare needle, or smooth waste yarn.



detail of leaf lace pattern motif

Piece 2:

Repeat directions as for Piece 1, making a total of ten repeats of the pattern plus one more purl row, but leaving a ***2-yard*** (6 foot) tail when cutting yarn.

Leave stitches on the needle (do not bind off or transfer to stitch holder).

Finishing

After both pieces have been completed, transfer Piece 1's stitches from holder to the second needle, starting at the edge where the yarn was cut.

Lay pieces next to each other right side up, with rows on the needles facing each other in parallel (i.e., head to head).

Graft pieces together in kitchener stitch with the tail of piece #2.

Weave in loose ends. Damp block severely to size.